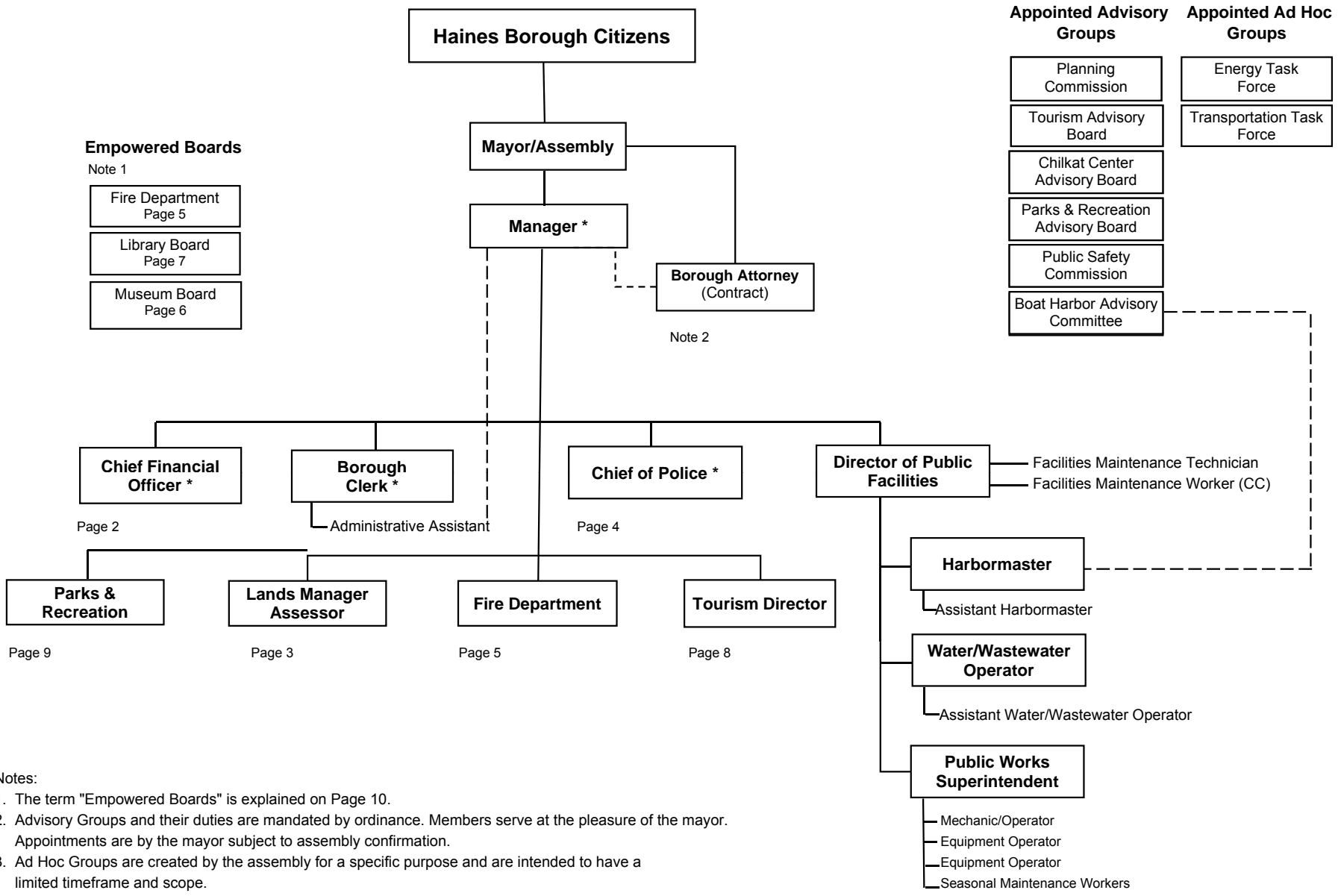




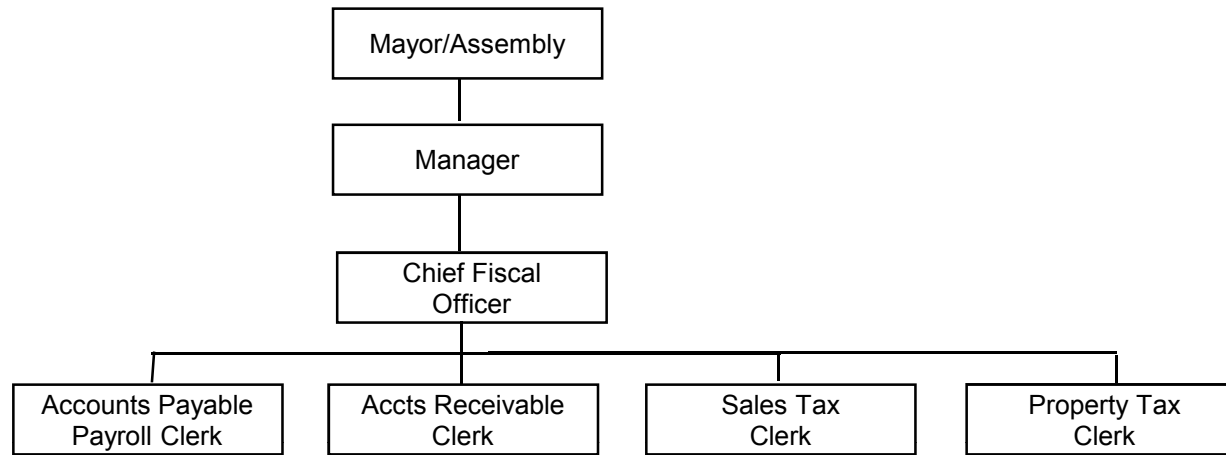
Haines Borough Organization Chart - Adopted 9-12-07



Notes:

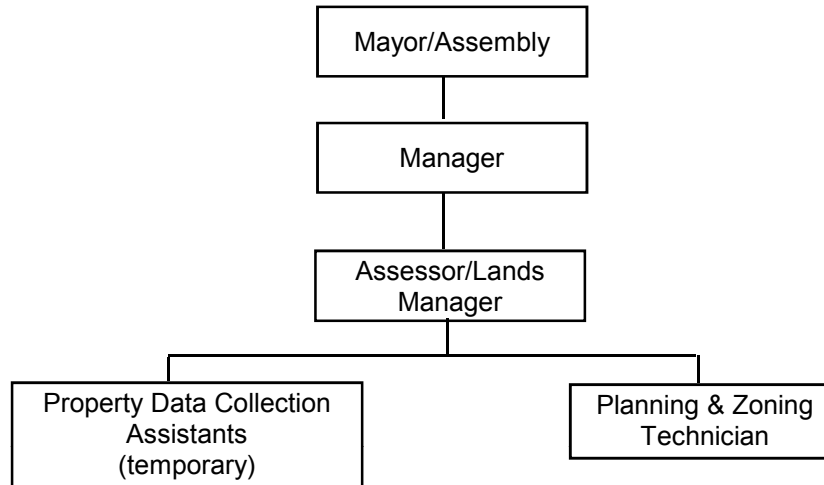
1. The term "Empowered Boards" is explained on Page 10.
2. Advisory Groups and their duties are mandated by ordinance. Members serve at the pleasure of the mayor. Appointments are by the mayor subject to assembly confirmation.
3. Ad Hoc Groups are created by the assembly for a specific purpose and are intended to have a limited timeframe and scope.
3. A solid line indicates a direct reporting relationship; a dotted line indicates an information flow or advisory relationship
4. An asterisk indicates that the position is a borough officer.
5. In the Borough Manager's absence, the Borough Clerk will act as manager followed by other borough officers in order of seniority.

FINANCE DEPARTMENT



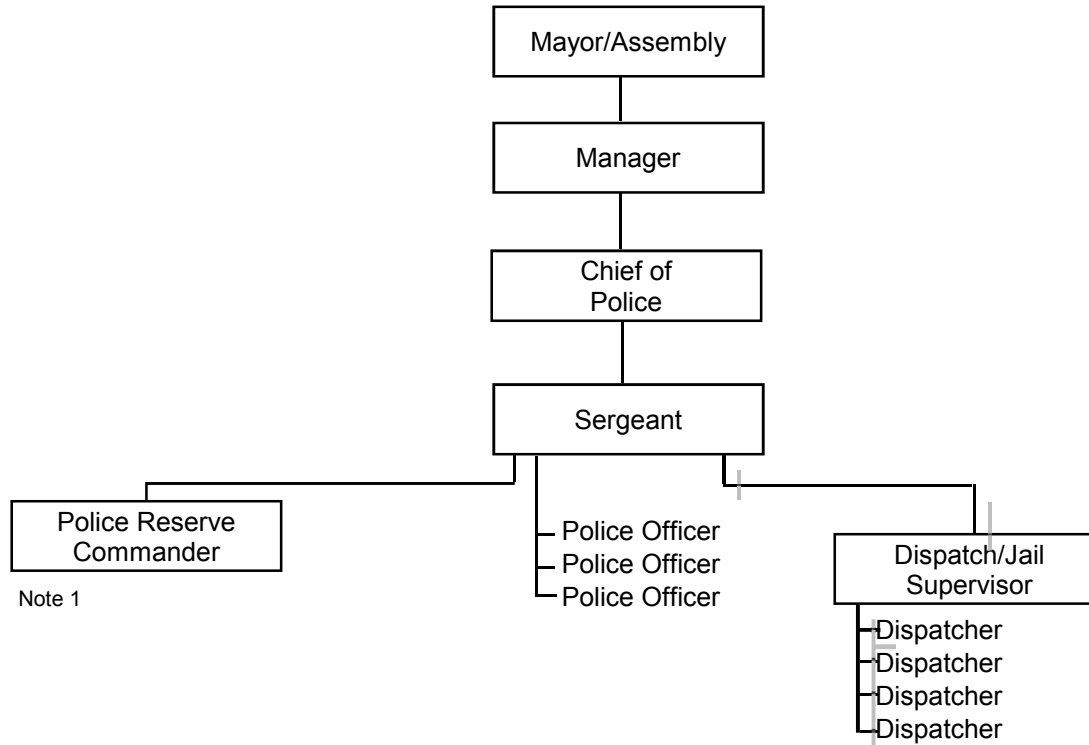
Haines Borough
Proposed Organization of the Executive Branch

ASSESSOR/LANDS MANAGEMENT DEPARTMENT



Haines Borough
Proposed Organization of the Executive Branch

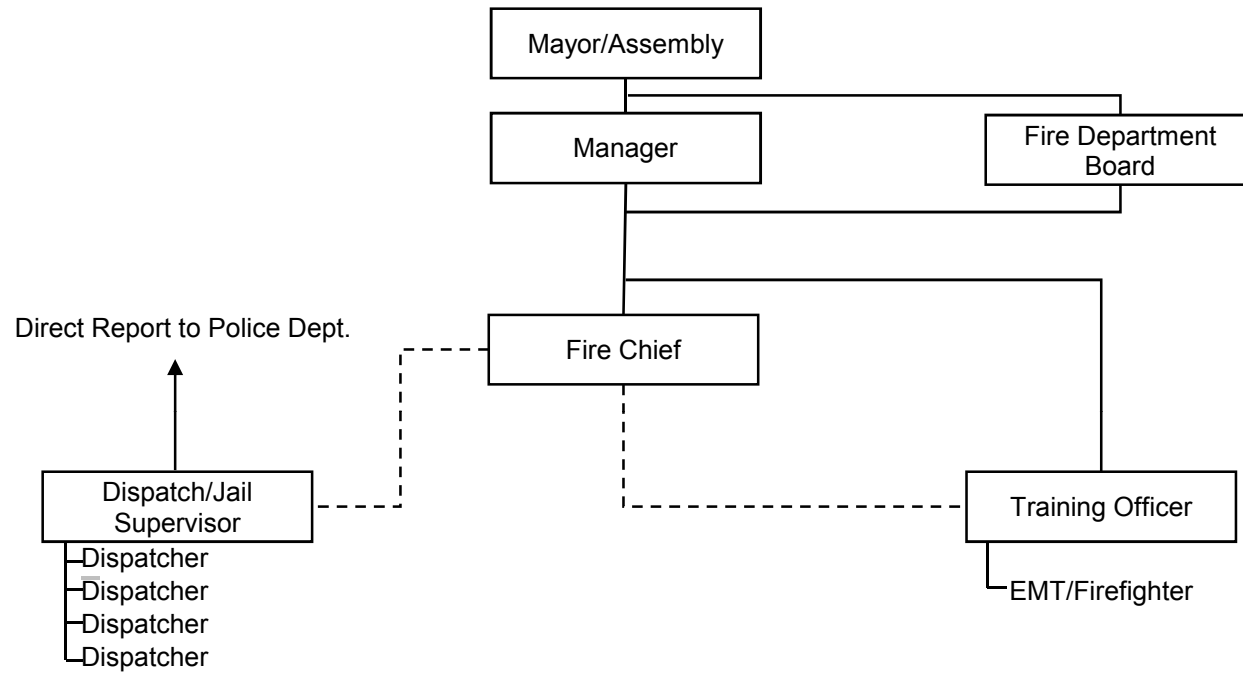
POLICE DEPARTMENT



Notes:

1. The Police Reserve Commander position is normally held by one of the police officers.

**Haines Borough
Proposed Organization of the Executive Branch
FIRE DEPARTMENT**

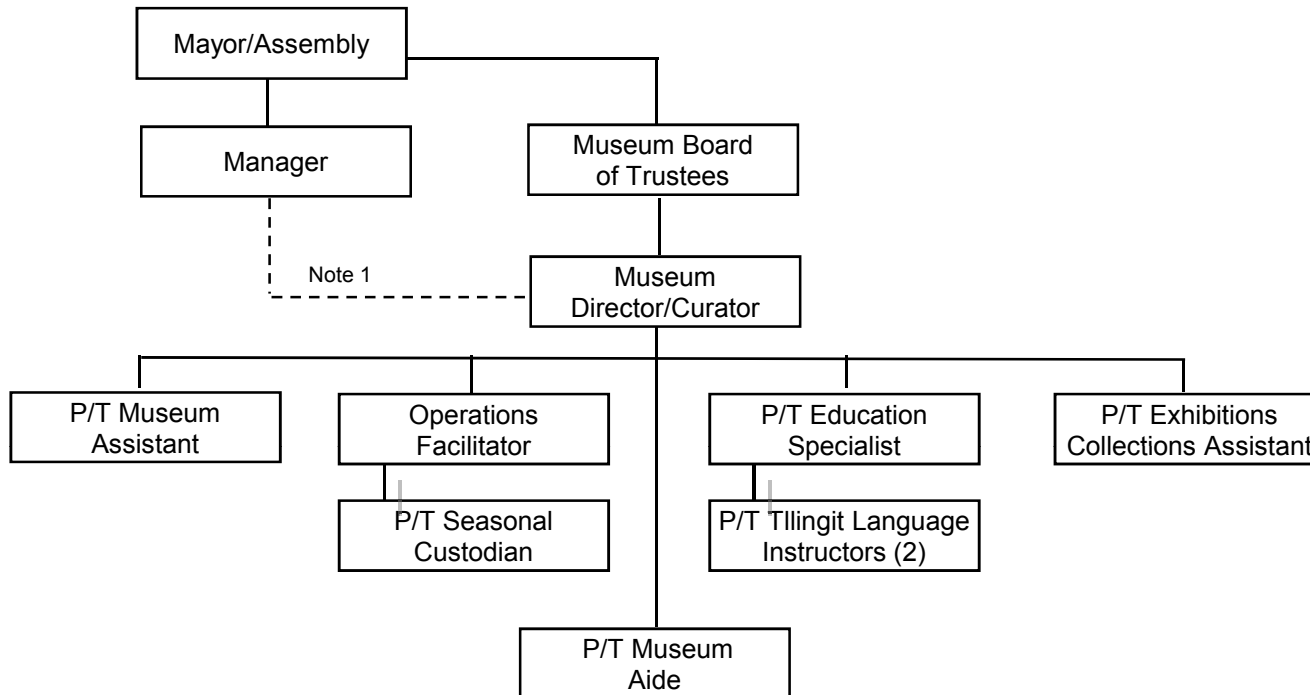


Notes:

Fire Chief reports directly to both the Manager and the Fire Department (per code).

**Haines Borough
Proposed Organization of the Executive Branch**

MUSEUM

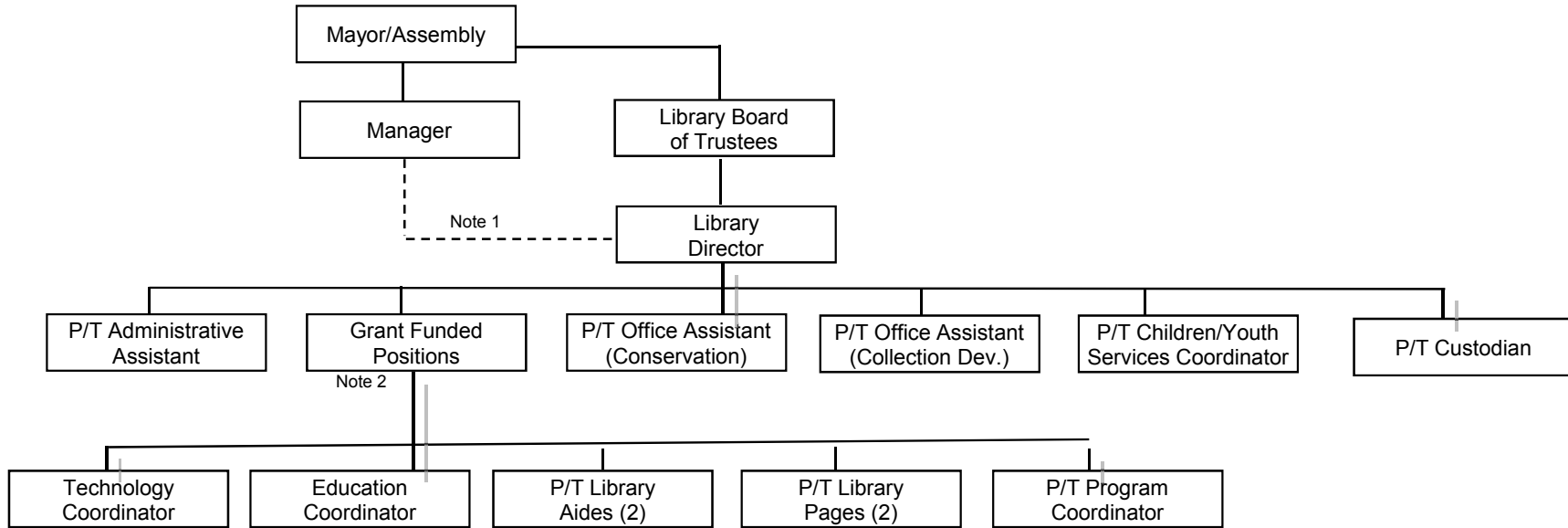


Notes:

Note 1 - The museum staff are Borough Employees. The Museum Director reports directly to the Museum Board of Trustees but has a functional support relationship with the manager (and his staff as he so delegates) for payroll and accounting services. Funds for the operation of the museum are appropriated by the assembly each year. To the extent the museum's expenses exceed such appropriations, the deficit is made up from unrestricted grants and income to the museum.

Haines Borough
Proposed Organization of the Executive Branch

LIBRARY

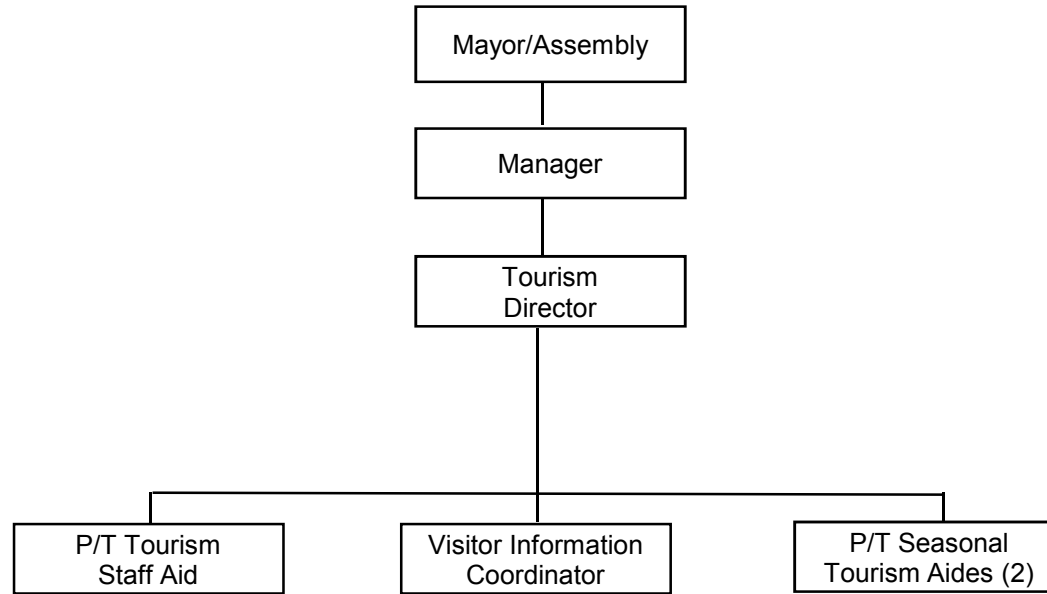


Note 1 - The library staff are Borough Employees. The Library Director reports directly to the Library Board of Trustees but has a functional support relationship with the manager (and his staff as he so delegates) for payroll and accounting services. Funds for the operation of the library are appropriated by the assembly each year. To the extent the library's expenses exceed such appropriations, the deficit is made up from unrestricted grants and income to the library.

Note 2 - All grant funded positions are assumed to be limited duration.

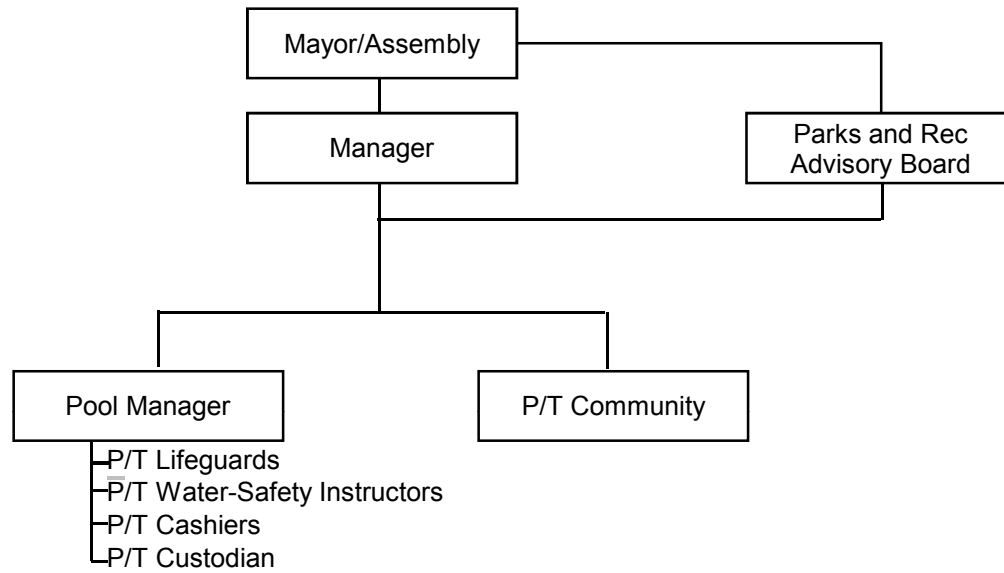
Haines Borough
Proposed Organization of the Executive Branch

TOURISM



Haines Borough
Proposed Organization of the Executive Branch

PARKS AND RECREATION DEPARTMENT



Empowered Boards

The Museum Board of Trustees, Library Board of Trustees and, to a certain extent, the Fire Department Board are designated as "empowered" boards although the respective enabling codes do not use that term.

An empowered board has overall authority to...

- Assume responsibility and stewardship over assets
- Promulgate regulations, fees, charges, and policies
- Negotiate and enter into contracts and grant agreements
- Apply for and administer funds from state and federal agencies (as well as from the borough assembly)