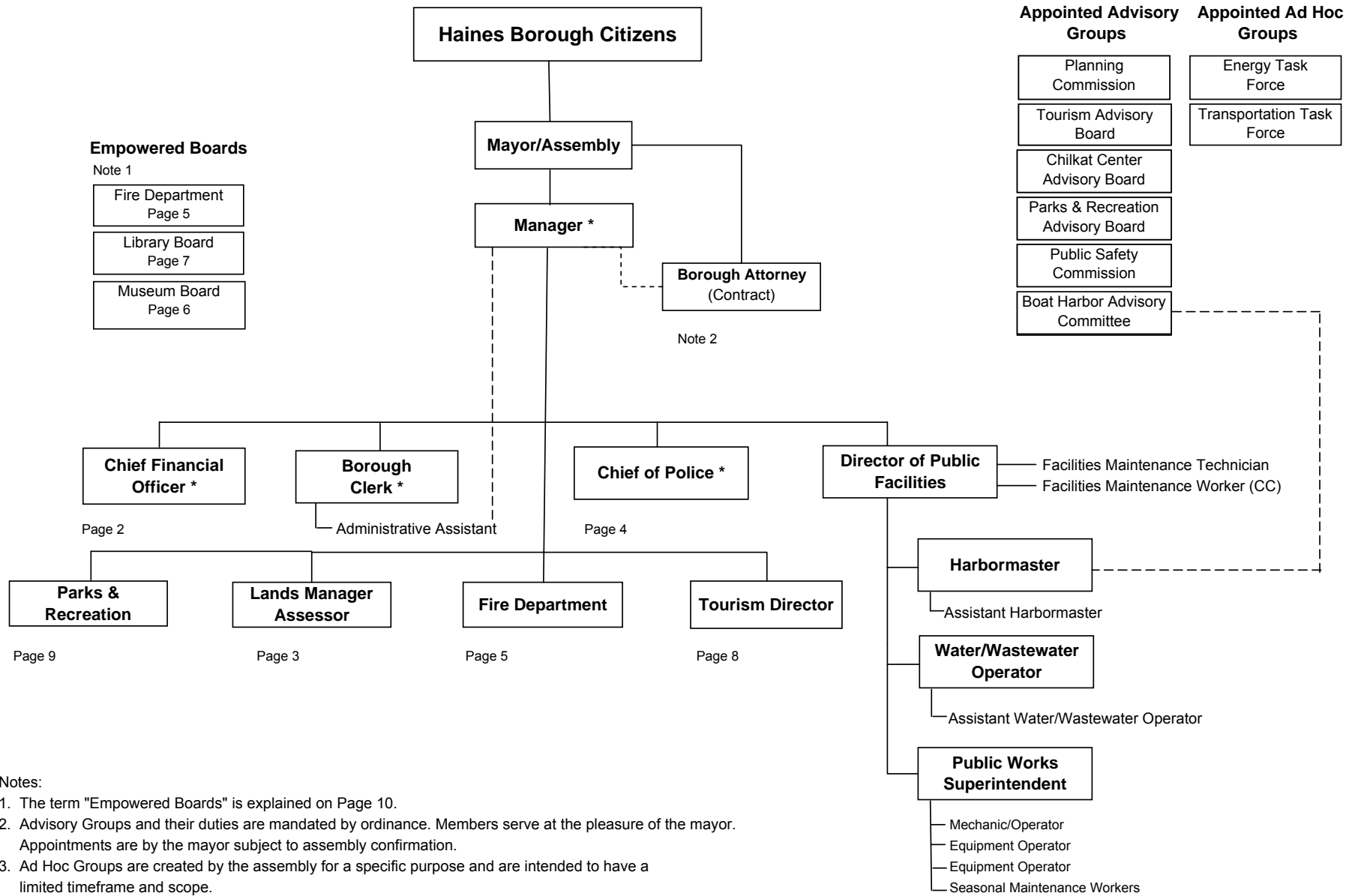
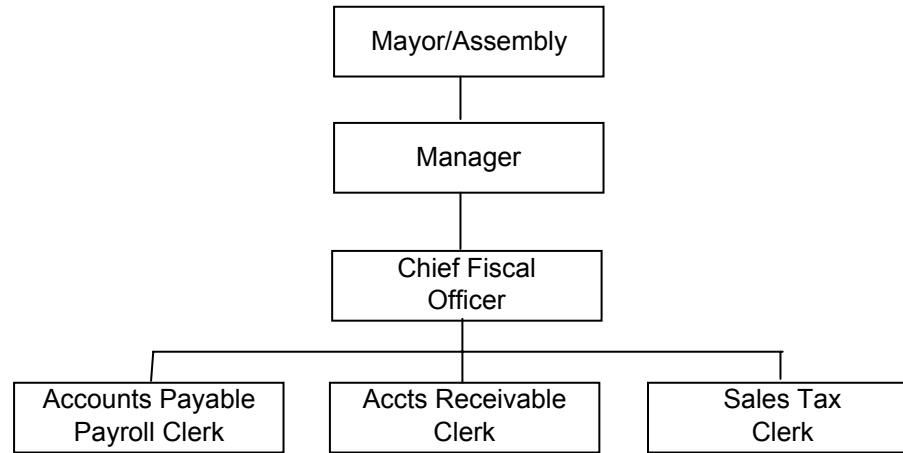




# Haines Borough Organization Chart - Proposed

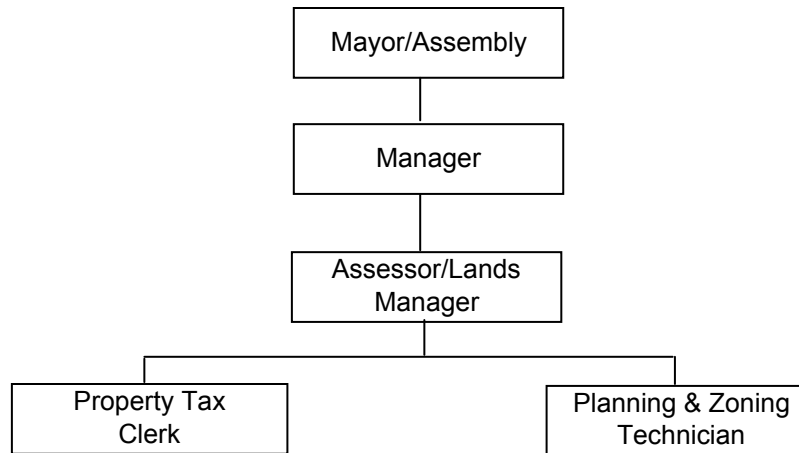


## FINANCE DEPARTMENT



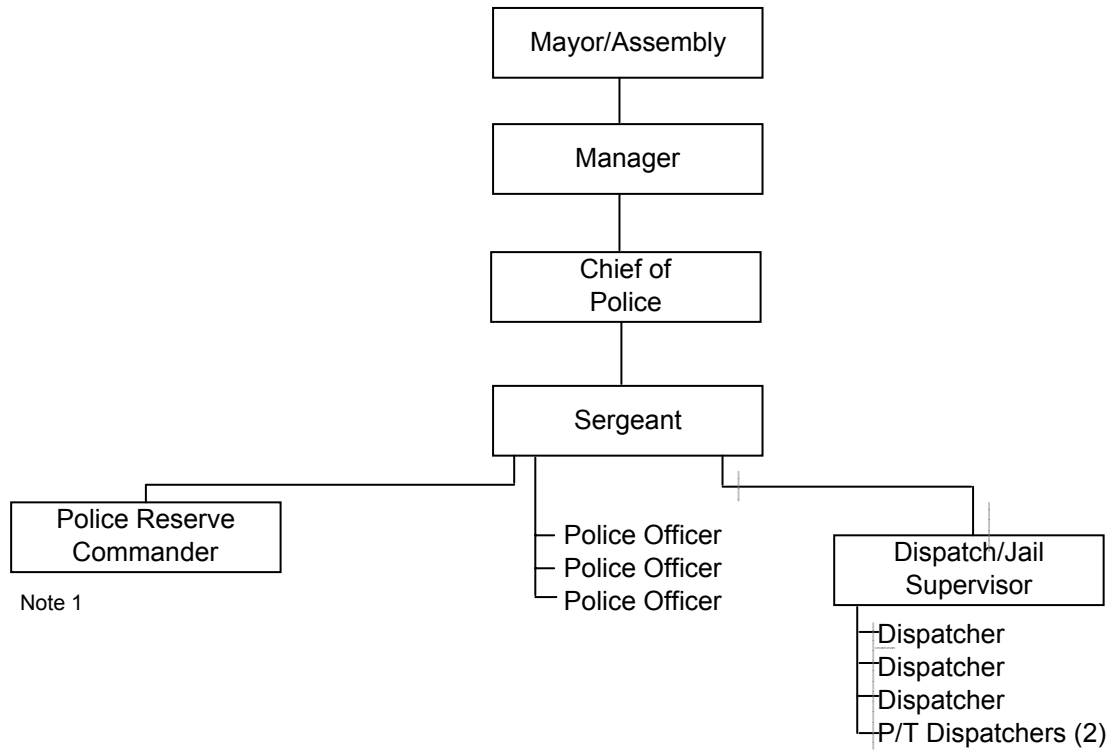
Haines Borough  
Proposed Organization of the Executive Branch

**ASSESSOR/LANDS MANAGEMENT DEPARTMENT**



Haines Borough  
Proposed Organization of the Executive Branch

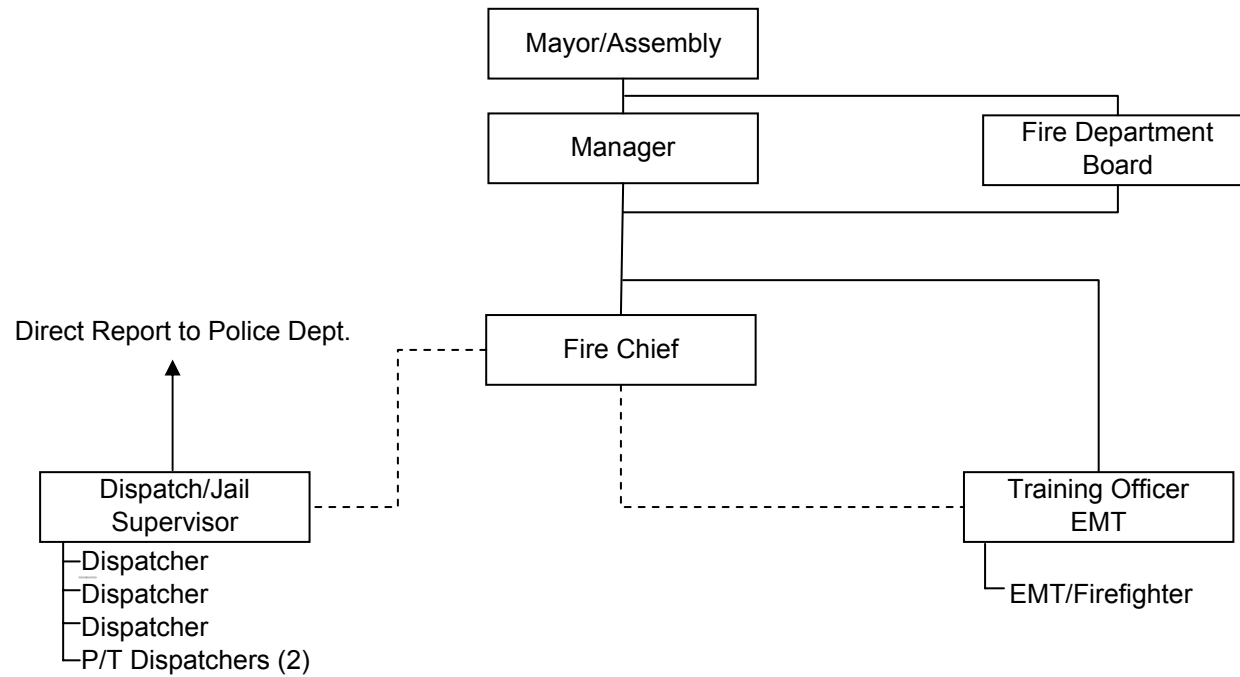
**POLICE DEPARTMENT**



Notes:

1. The Police Reserve Commander position is normally held by one of the police officers.

**Haines Borough  
Proposed Organization of the Executive Branch  
FIRE DEPARTMENT**

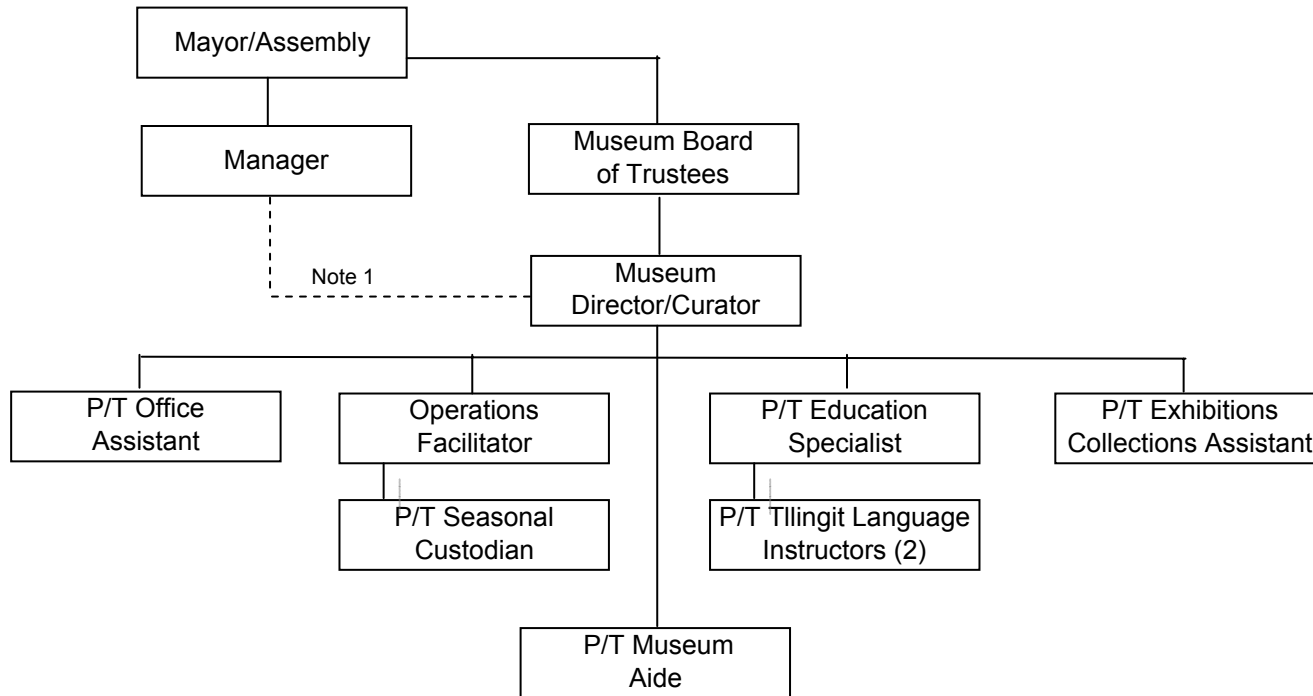


**Notes:**

Fire Chief reports directly to both the Manager and the Fire Department (per code).

**Haines Borough  
Proposed Organization of the Executive Branch**

**MUSEUM**

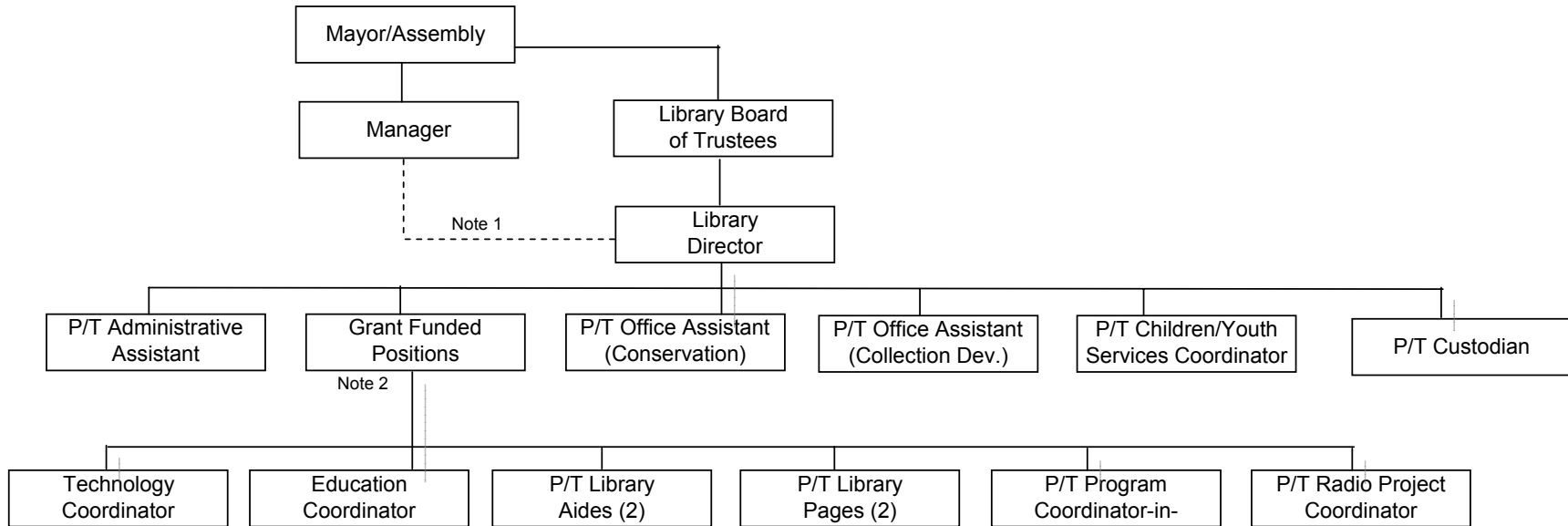


Notes:

Note 1 - The museum staff are Borough Employees. The Museum Director reports directly to the Museum Board of Trustees but has a functional support relationship with the manager (and his staff as he so delegates) for payroll and accounting services. Funds for the operation of the museum are appropriated by the assembly each year. To the extent the museum's expenses exceed such appropriations, the deficit is made up from unrestricted grants and income to the museum.

**Haines Borough  
Proposed Organization of the Executive Branch**

**LIBRARY**

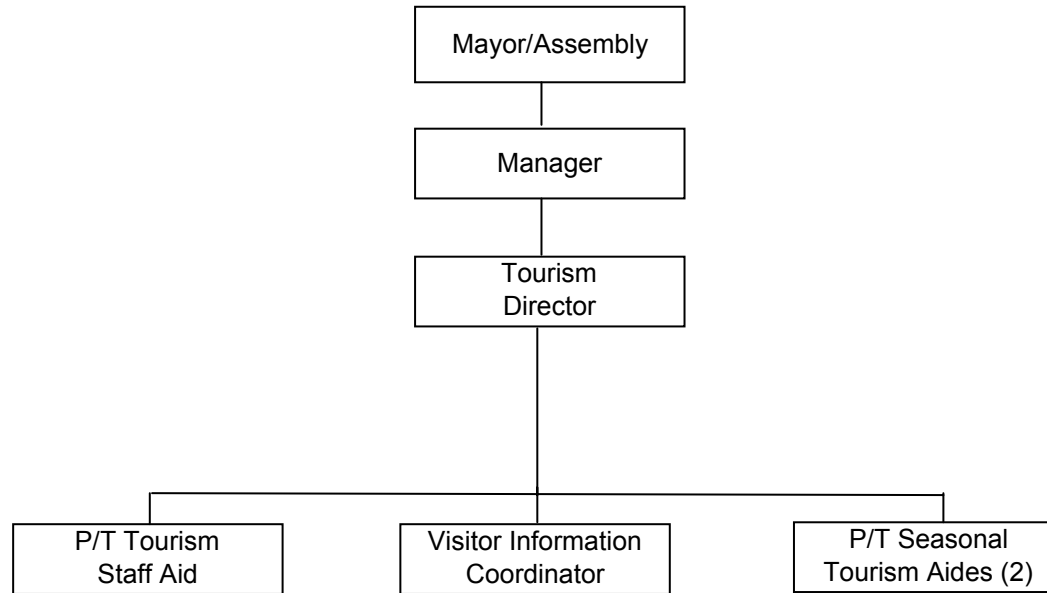


Note 1 - The library staff are Borough Employees. The Library Director reports directly to the Library Board of Trustees but has a functional support relationship with the manager (and his staff as he so delegates) for payroll and accounting services. Funds for the operation of the library are appropriated by the assembly each year. To the extent the library's expenses exceed such appropriations, the deficit is made up from unrestricted grants and income to the library.

Note 2 - All grant funded positions are assumed to be limited duration.

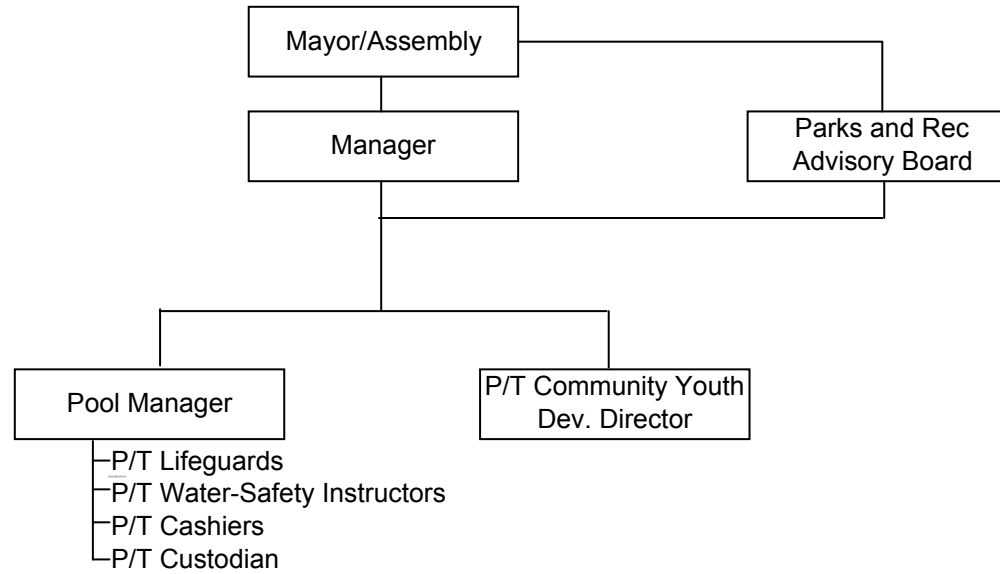
**Haines Borough  
Proposed Organization of the Executive Branch**

**TOURISM**



Haines Borough  
Proposed Organization of the Executive Branch

**PARKS AND RECREATION DEPARTMENT**



# Empowered Boards

The Museum Board of Trustees, Library Board of Trustees and, to a certain extent, the Fire Department Board are designated as "empowered" boards although the respective enabling codes do not use that term.

An empowered board has overall authority to...

- Assume responsibility and stewardship over assets
- Promulgate regulations, fees, charges, and policies
- Negotiate and enter into contracts and grant agreements
- Apply for and administer funds from state and federal agencies (as well as from the borough assembly)