



HAINES BOROUGH, ALASKA

P.O. BOX 1209, HAINES, ALASKA 99827

Administration 907.766.2231 ♦ (fax) 907.766.2716

Tourism 907.766.2234 ♦ (fax) 907.766.3155

Police Dept. 907.766.2121 ♦ (fax) 907.766.2190

Fire Dept. 907.766.2115 ♦ (fax) 907.766.3373

TO ALL BID DOCUMENT HOLDERS STREET IMPROVEMENTS – PHASE 2 PROJECT

The following addendum was issued today. Please acknowledge receipt of the addendum on your bid documents. Thank you.

Sincerely,

Julie Cozzi, MMC
Borough Clerk

**HAINES BOROUGH
HAINES STREET IMPROVEMENTS PHASE II**

ADDENDUM TO THE CONTRACT

Addendum No: 1

Bid Opening Date:
July 20, 2011 at 2:00 P.M.

Pages This Addendum: Three (3)

Previous Addenda: None

To: All Planholders of Record

July 14, 2011

The contract documents are modified as indicated herein. All other terms and conditions remain unchanged. Bidders are required to acknowledge this addendum on the Bid Proposal. Make the following changes to the contract documents:

ADDENDUM NO. 1

1. SECTION 00310 – BID SCHEDULE: Pay Item No. 641(4) Temporary Erosion and Pollution Control Amendments - Insert the figure \$2,500.00 for this Contingent Sum Item.

2. SECTION 301 – AGGREGATE BASE AND SURFACE COURSE: Subsection 301-2.01 Materials, add the following:

All existing aggregate base course that is suitable for reuse following excavation shall be salvaged during construction. Salvaged material shall be inspected, sampled and tested by the Owner prior to reuse. Salvaged material that meets the gradation specification for aggregate base course shall be installed to the lines and grades as shown on the plans. Salvaged material that meets the gradation specification for subbase shall be utilized for subbase prior to importing new material. Salvaged material that does not meet specifications for base course or subbase shall become the property of the Contractor to utilize for other incidental work items on the project or shall be wasted off site.

3. SECTION 608 – SIDEWALKS: Subsection 608-3.03 Curb Ramps, add the following

Tactile Warning Strips shall be installed at all curb ramps as shown on plans per the typical details.

4. SECTION 202 – REMOVAL OF STRUCTURES AND OBSTRUCTIONS: Subsection 202-3.05 Method of Measurement, add the following:

Removal and replacement of existing structures including, but not limited to, sidewalks, curb and gutter and concrete aprons associated with the installation of new project utilities, including storm sewer, sanitary sewer and water utilities shall be considered incidental to utility installations.

5. SECTION 401 – ASPHALT CONCRETE PAVEMENT: Subsection 401-3.14 Joints, add the following:

Crafco Inc. Pavement Joint Adhesive hot applied modified asphalt composition shall be used to adhere and tack all longitudinal and other cold joints.

6. SPECIAL PROVISIONS: SECTION 401 – ASPHALT CONCRETE PAVEMENT: Subsection 401-4.02 Acceptance and Testing. Delete the first sentence of the first paragraph. Add the following:

Samples to be used for the purposes of material acceptance, assurance, or re-testing shall be sampled by the ENGINEER.

7. SECTION 604 – MANHOLES AND INLETS: Subsection 604-3.01 Construction Requirements, add the following:

Adjust existing storm sewer manholes and storm sewer catch basins as shown on the plans. All existing concrete aprons at these structures shall be demolished and waste shall be removed to an approved disposal site. Where existing structure inlets are to be covered, steel plate (1/2” thick min.) shall be installed to cover and overlap the entire opening area by 6 inches. Aggregate base course and asphalt concrete pavement shall then be installed, per typical design sections to finish grade as shown on the plans.

8. SECTION 604 – MANHOLES AND INLETS: Subsection 604-4.01 Method of Measurement, add the following:

The adjustment of existing storm sewer structures to finish grade, and all associated materials shall be considered incidental work.

9. SECTION 643 – TRAFFIC MAINTENANCE: subsection 643-3.07 Maintenance of Traffic during Suspension of Work, Replace the word “Department” with “Haines Borough” at all locations in this subsection.

10. SECTION 705 – JOINT MATERIALS: Subsection 705-2.01 Joint Fillers, Subsection 705-2.02 Joint Sealer, add the following:

Crafco Inc. Roadsaver 201 hot applied asphalt base product shall be used to fill and seal all expansion joint locations in concrete sidewalks and curbs.

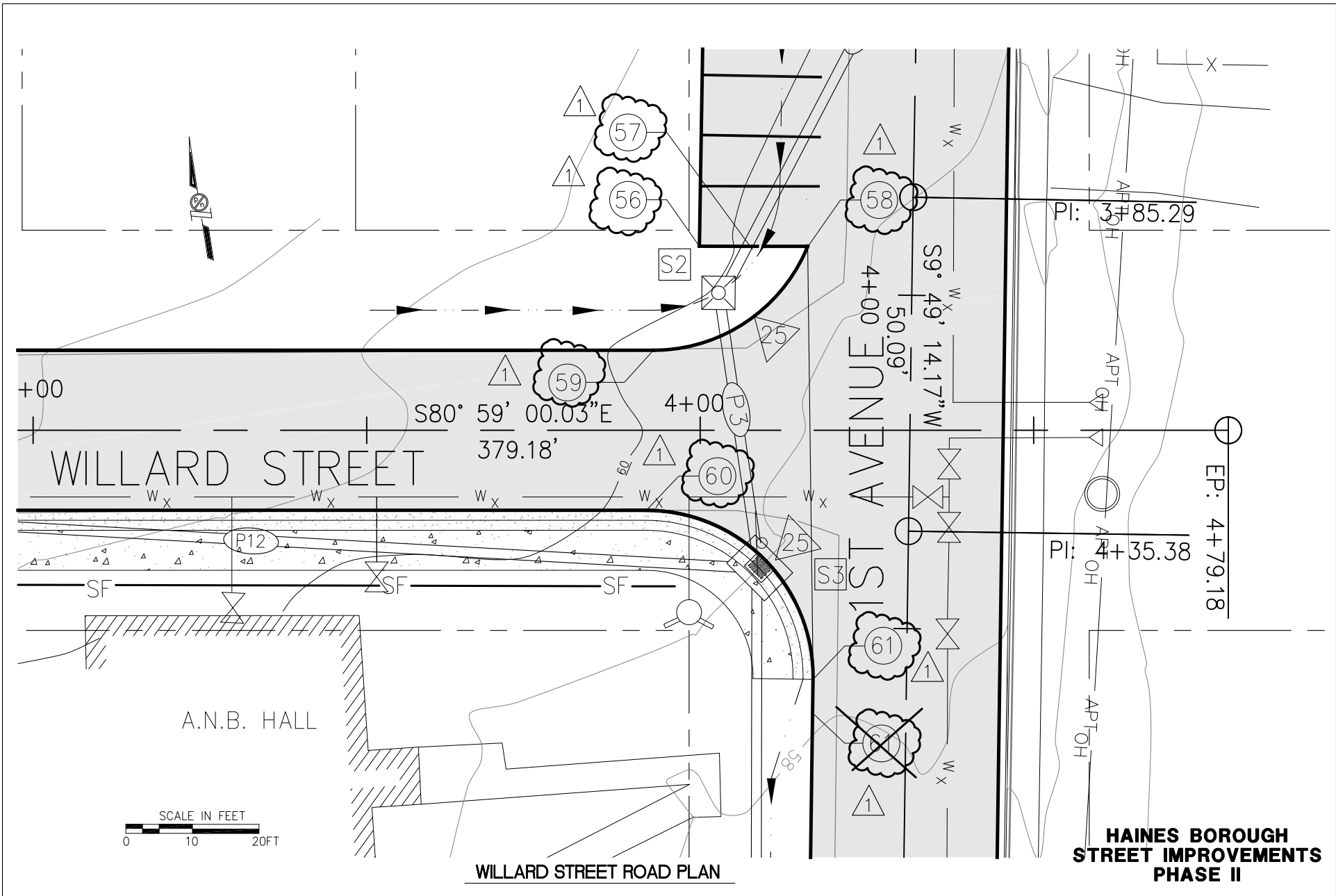
11. Drawing Sheet E3, 10 of 19, Miscellaneous Details: Typical Section A, add the following note:

“Note: A minimum 32” splice length shall be used at all reinforcement splices.”

12. Drawing Sheet G1, 15 of 19, 1st Avenue, Main Street to Sta. 7+00: Delete all traffic markings and striping shown on this sheet.

13. Drawing Sheet H1, 17 of 19, Willard Street, 2nd Ave. to 1st Ave: Road Layout Points have been renumbered to match all other sheets. See attachment. Refer to Drawing Sheet C2, 4 of 19, Summary Tables for all point locations and descriptions.

END OF ADDENDUM NO 1.



WILLARD STREET ROAD PLAN

**HAINES BOROUGH
STREET IMPROVEMENTS
PHASE II**

REVISIONS

REV.	DATE	DESCRIPTION	DWN.	CKD.	APP.
1	7/14/11	RENUMBER LAYOUT POINTS TO MATCH ALL SHEETS			

P | N | D
ENGINEERS, INC.

9360 Glacier Highway, Ste. 100
Juneau, Alaska 99801
Phone: 907-586-2093
Fax: 907-586-2099
www.pnd-anc.com

**WILLARD STREET
2ND AVE. TO 1ST AVENUE**