

HAINES BOROUGH, ALASKA

P.O. BOX 1209, HAINES, ALASKA 99827

Administration 907.766.2231 ♦ (fax) 907.766.2716

Tourism 907.766.2234 ♦ (fax) 907.766.3155

Police Dept. 907.766.2121 ♦ (fax) 907.766.2190

Fire Dept. 907.766.2115 ♦ (fax) 907.766.3373

February 1, 2012

TO ALL BID DOCUMENT HOLDERS
VOCATIONAL EDUCATION BUILDING IMPROVEMENTS PROJECT

The following addendum was issued today. Please acknowledge receipt of the addendum on your bid documents. Thank you.

Sincerely,

A handwritten signature in black ink that reads "Jamie Heinz". The signature is written in a cursive, flowing style.

Jamie Heinz
Deputy Clerk

VOCATIONAL EDUCATION BUILDING IMPROVEMENTS



ADDENDUM TO THE RFP DOCUMENTS Page 1 of 5 total

Addendum No.: (1) One

Bid Submission Deadline:
Wednesday, February 29, 2012
2:00 p.m. Local Time

Previous Addenda: (0) None

Issued By: Haines Borough
P.O. Box 1209
Haines, Alaska 99827


DATE ADDENDUM ISSUED: February 1, 2012

The following items are modified as herein indicated. All other items remain the same.

PROJECT SPECIFICATIONS

- Item #1. Add Four (4) Drawing Sheets titled: Sheet 00 – Title Sheet, Sheet A1 – Demolition Plan – Exterior Evaluation, Sheet A2 – Level1 Floor Plan – Electrical Plan, Sheet A3 – Enlarged Floor Plan, Interior Elevations and Schedules

The Drawings to be added are following this addendum document.

By: 
Mark Earnest
Borough Manager

Please be sure to acknowledge on the *Bid* form that you have received this and all addenda.

END of ADDENDUM

A. This project is under the jurisdiction of the Alaska Department of Public Safety, Division of Fire Protection and is subject to visitation and inspection by the building official and enforcement of the applicable codes.


B. All materials and workmanship shall comply with the best practices of the trades and with all applicable codes and regulations including, but not limited to, the International Building, Fire, Plumbing, and Mechanical Codes and the National Electrical Code as adopted by The Haines Borough, concerning minimum requirements. These drawings shall govern where the minimum requirements are shown to have been exceeded. In the event of conflict between these drawings and the applicable codes and regulations, the latter shall prevail.

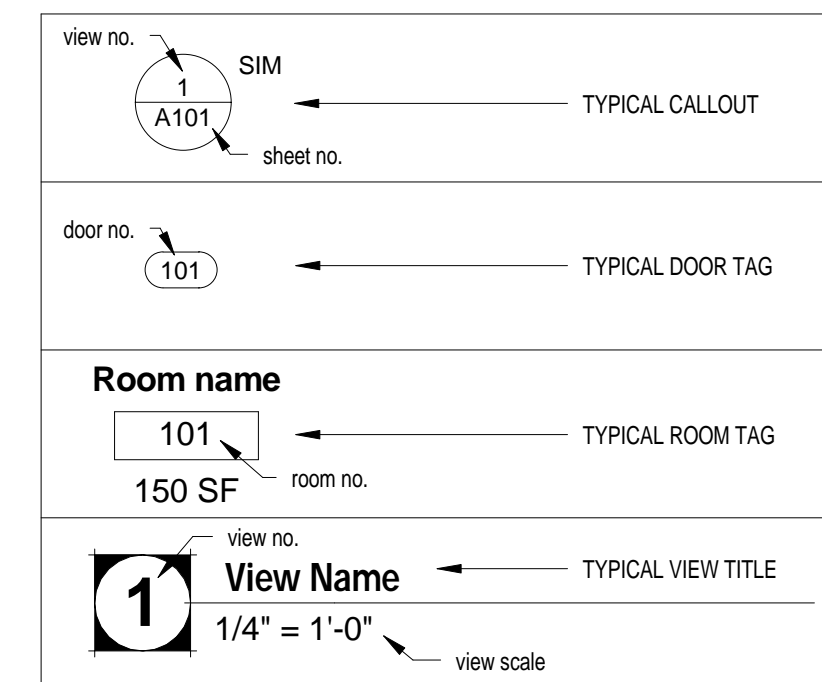
C. Contractor to verify all relevant existing conditions prior to offering bid or commencing work. All existing conditions at variance with drawings and notes to be brought to the attention of the owner immediately.


D. The drawings are partially diagrammatic in nature and do not purport to show every item required. All labor and materials required for a complete project in accordance with the intent of the drawings and specifications shall be provided, whether specifically called out or not. Contractor is responsible for information that pertains to the means, methods, techniques, sequences, and procedures of construction and for the coordination of the work of all trades.

E. Any changes to the construction documents shall be recorded on a set of documents marked 'As-built Record Set' and turned into the owner at the completion of the work.

F. Provide shop drawings for shop fabricated items to the Owner's representative for approval prior to fabrication.

 **General Notes**



 **Symbol Legend**

1/4" = 1'-0"

This project addresses current inadequacies of accessibility and thermal performance in the Haines School Vocation Education Building.

Twelve windows and one overhead sectional door are to be replaced with units that meet federal Energy Star requirements.

To comply with the Americans with Disability Act Accessibility Guidelines, one of the two existing toilet rooms will be modified and expanded as an accessible, unisex toilet room. The existing Men's Room will remain unchanged, apart from new flooring and base.

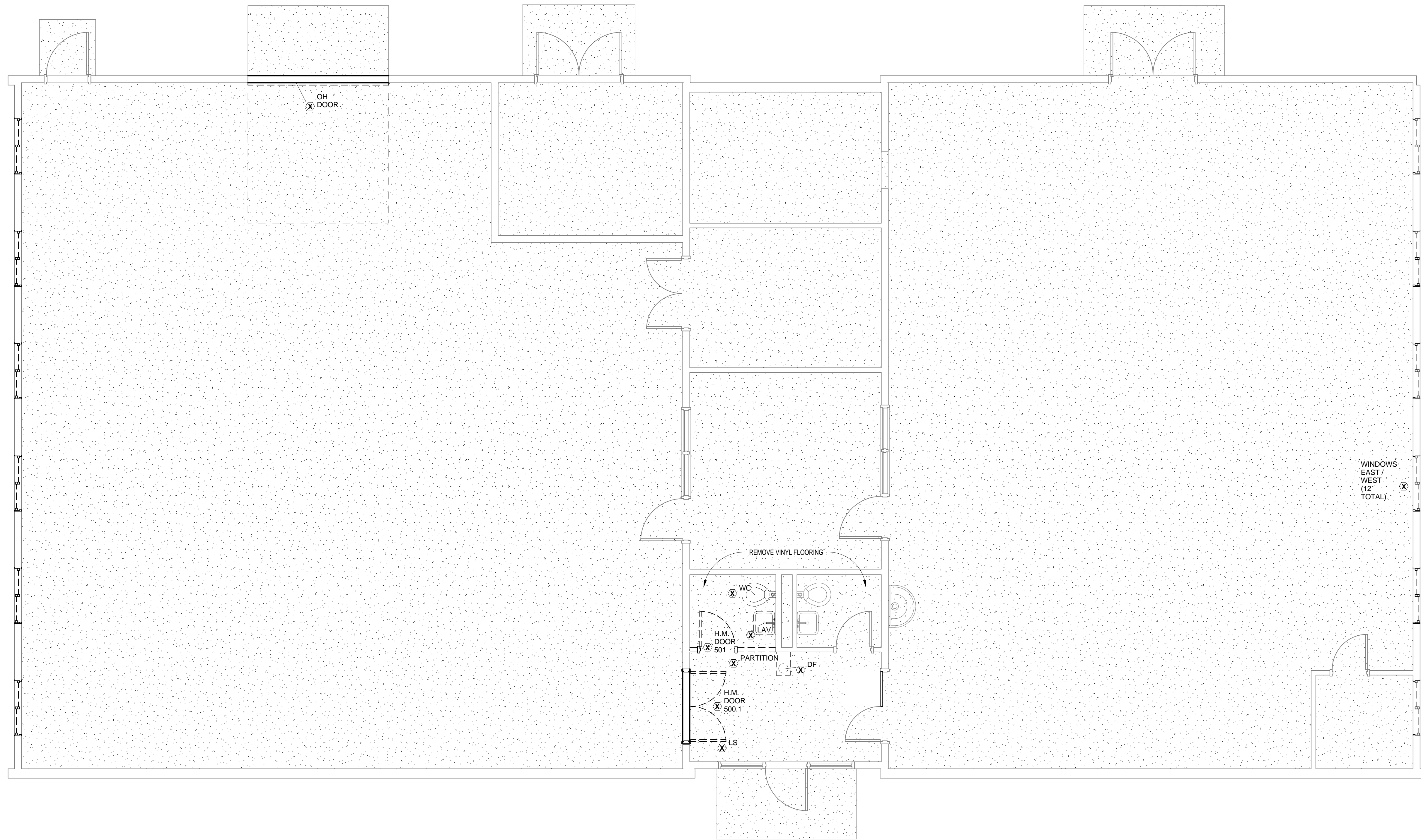
A barrier-free drinking fountain, properly sized doors and wall protection will also be added to the adjoining vestibule. The Auto Shop will be equipped with its own hand wash sink.

Lastly, new commercial gutters and downspouts will be installed on the North and South sides of the building.

 **Project Description**

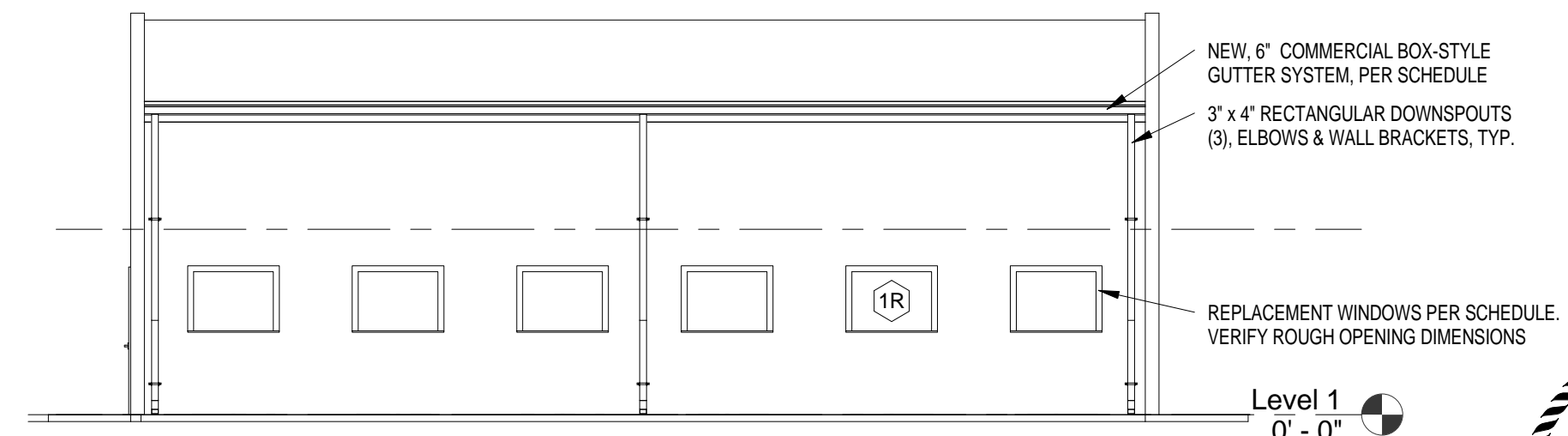
SHEET LIST	
00	Title Sheet
A1	Demolition Plan - Exterior Elevation
A2	Level 1 Floor Plan Electrical Plan
A3	Enlarged Floor Plan, Interior Elevations & Schedules



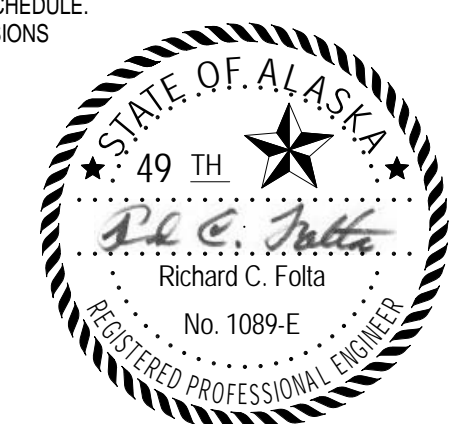


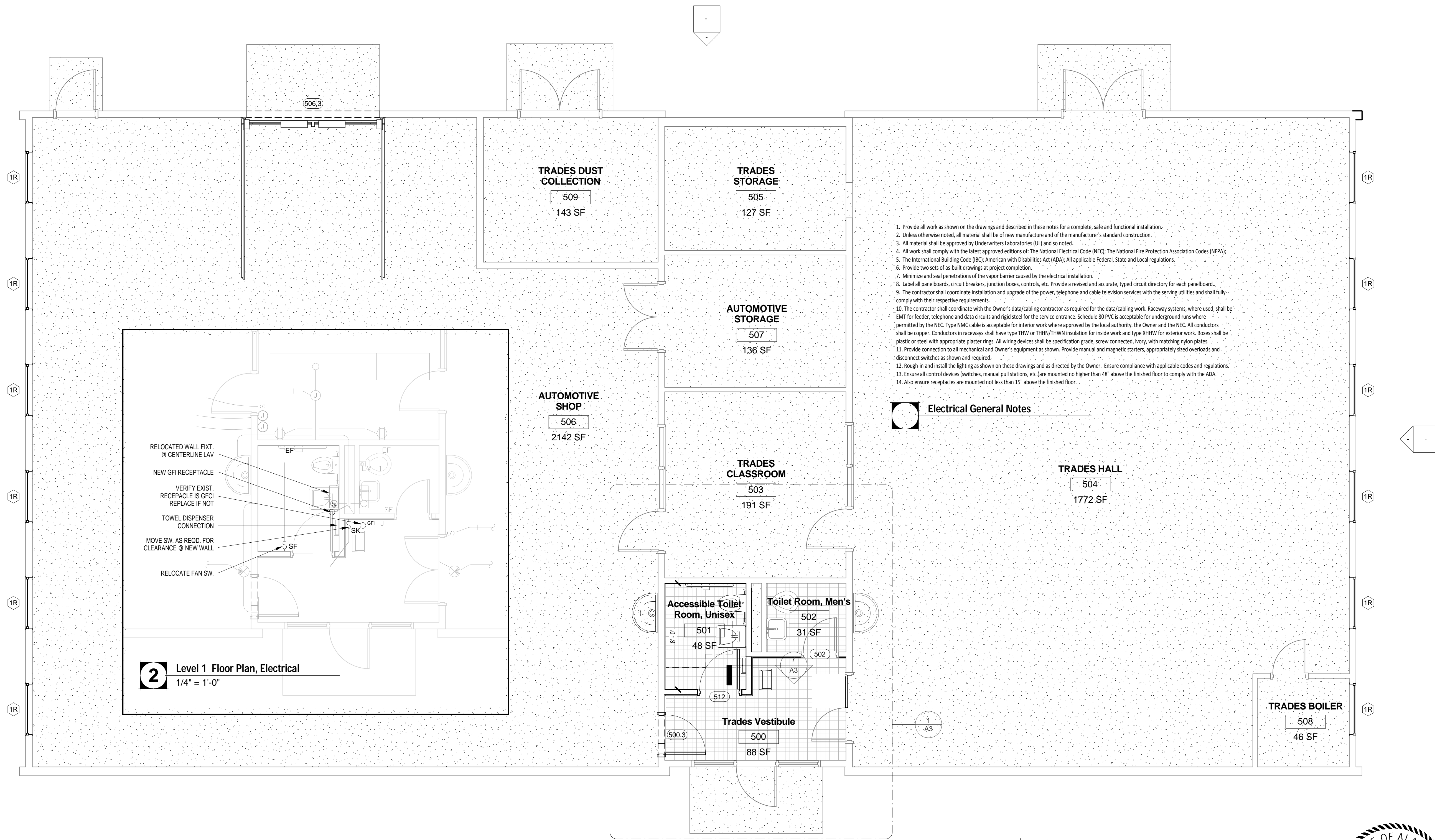
1 Level 1 Demolition
1/4" = 1'-0"

DEMOLITION SCHEDULE			
TAG	DESCRIPTION	RETAIN	RE-USE
DF	DRINKING FOUNTAIN	Yes	No
H.M. DOOR 500.1	60" DOUBLE	Yes	No
H.M. DOOR 501	30" SINGLE	Yes	No
LAV	HAND WASH SINK	Yes	No
LS	LOCKSET, DOOR 500.1	Yes	Yes
LS	LOCKSET, DOOR 501	Yes	Yes
OH DOOR	OVERHEAD DOOR & TRACK	Yes	No
PARTITION	INTERIOR, NON-BEARING	No	No
WC	WALL-HUNG TOILET	Yes	No
WINDOWS EAST / WEST (12 TOTAL)		Yes	No



2 Exterior Elevation, South
1/8" = 1'-0"





1. Provide all work as shown on the drawings and described in these notes for a complete, safe and functional installation.
2. Unless otherwise noted, all material shall be of new manufacture and of the manufacturer's standard construction.
3. All material shall be approved by Underwriters Laboratories (UL) and so noted.
4. All work shall comply with the latest approved editions of: The National Electrical Code (NEC), The National Fire Protection Association Codes (NFPA);
5. The International Building Code (IBC), American with Disabilities Act (ADA); All applicable Federal, State and Local regulations.
6. Provide two sets of as-built drawings at project completion.
7. Minimize and seal penetrations of the vapor barrier caused by the electrical installation.
8. Label all panelboards, circuit breakers, junction boxes, controls, etc. Provide a revised and accurate, typed circuit directory for each panelboard.
9. The contractor shall coordinate installation and upgrade of the power, telephone and cable television services with the serving utilities and shall fully comply with their respective requirements.
10. The contractor shall coordinate with the Owner's data/cabing contractor as required for the data/cabing work. Raceway systems, where used, shall be EMT for feeder, telephone and data circuits and rigid steel for the service entrance. Schedule 80 PVC is acceptable for underground runs where permitted by the NEC. Type MMC cable is acceptable for interior work where approved by the local authority, the Owner and the NEC. All conductors shall be copper. Conductors in raceways shall have type THW or THHN/THWN insulation for inside work and type XHHW for exterior work. Boxes shall be plastic or steel with appropriate plaster rings. All wiring devices shall be specification grade, screw connected, ivory, with matching nylon plates.
11. Provide connection to all mechanical and Owner's equipment as shown. Provide manual and magnetic starters, appropriately sized overloads and disconnect switches as shown and required.
12. Rough-in and install the lighting as shown on these drawings and as directed by the Owner. Ensure compliance with applicable codes and regulations.
13. Ensure all control devices (switches, manual pull stations, etc.) are mounted no higher than 48" above the finished floor to comply with the ADA.
14. Also ensure receptacles are mounted not less than 15" above the finished floor.

Electrical General Notes

2 Level 1 Floor Plan, Electrical
1/4" = 1'-0"

1 Level 1 Floor Plan
1/4" = 1'-0"

NEW / REPLACEMENT WINDOW SCHEDULE						
Type	Manufacturer	Model	Glass	Material	Rough Width	Rough Height
Picture	Milgard	Ultra 3000 Series	SunCoat, Low-E	Fiberglass	4' - 0"	3' - 0"
Finish			Factory White			
Comments			See Specifications; Verify R.O. on Site			
URL			http://pro.milgard.com/architectural-library/			

Grand total: 12

NEW / REPLACEMENT DOOR SCHEDULE												
Door No.	Type	Opening Width	Opening Height	Manufacturer	Model	Description	Frame Type	Hardware	Finish			
									Door	Frame	Comments	URL
506.3	Sectional O.H. Door_Full Vision @ Section 3	10' - 0"	10' - 0"	Clipay	3722	2" insul. stucco embossed 20 ga. stl. flush exter. std. 15" R Track		Per Specifications	Factory White	Paint	Paint Doors, #512; #502 & #500.3	www.clopaydoor.com
512	3'-0" x 7'-0" Metal_5.75" x 2"			Steelcraft		Standard Steel Door & Frame	F16_16 ga Dbl. Rabbet K.D.	Reuse fr. Door # 501 Existing	Paint	Paint	Paint Doors, #512; #502 & #500.3	www.steelcraft.com
500.3	3'-0" x 7'-0" Metal_7.75" x 2" Narrow Lite			Steelcraft		Narrow Lite Vision Steel Door & Frame Per Interior Elevations	F18_18 ga Dbl. Rabbet K.D.	Per Specifications	Paint	Paint	Paint Doors, #512; #502 & #500.3	www.steelcraft.com





Since 1980

ALASKA OFFICE:
P.O. BOX 45
HAINES, AK 99827
(907) 766-2242 PHONE & FAX
(928) 225-9542 MOBILE

ARIZONA OFFICE:
430 W. PINE AVE
FLAGSTAFF AZ, 86001
(928) 774-8287 PHONE & FAX
(928) 225-9542 MOBILE

www.deadtreedesign.com

Engineering Review
Richard C. Folla
Haines, Alaska 99827
907.766.2004

Client
The Haines Borough
PO Box 1208
Haines, Alaska 99827
907.766.2231

The Haines Borough
School Vocation Ed. Building Improvements

Enlarged Floor Plan, Interior
Elevations & Schedules

Scale: As indicated
(HALF SCALE FOR 11" X 17" SHEETS)

COPYRIGHT PROTECTED CONTENT:
PROPRIETARY DESIGN AND DETAILS

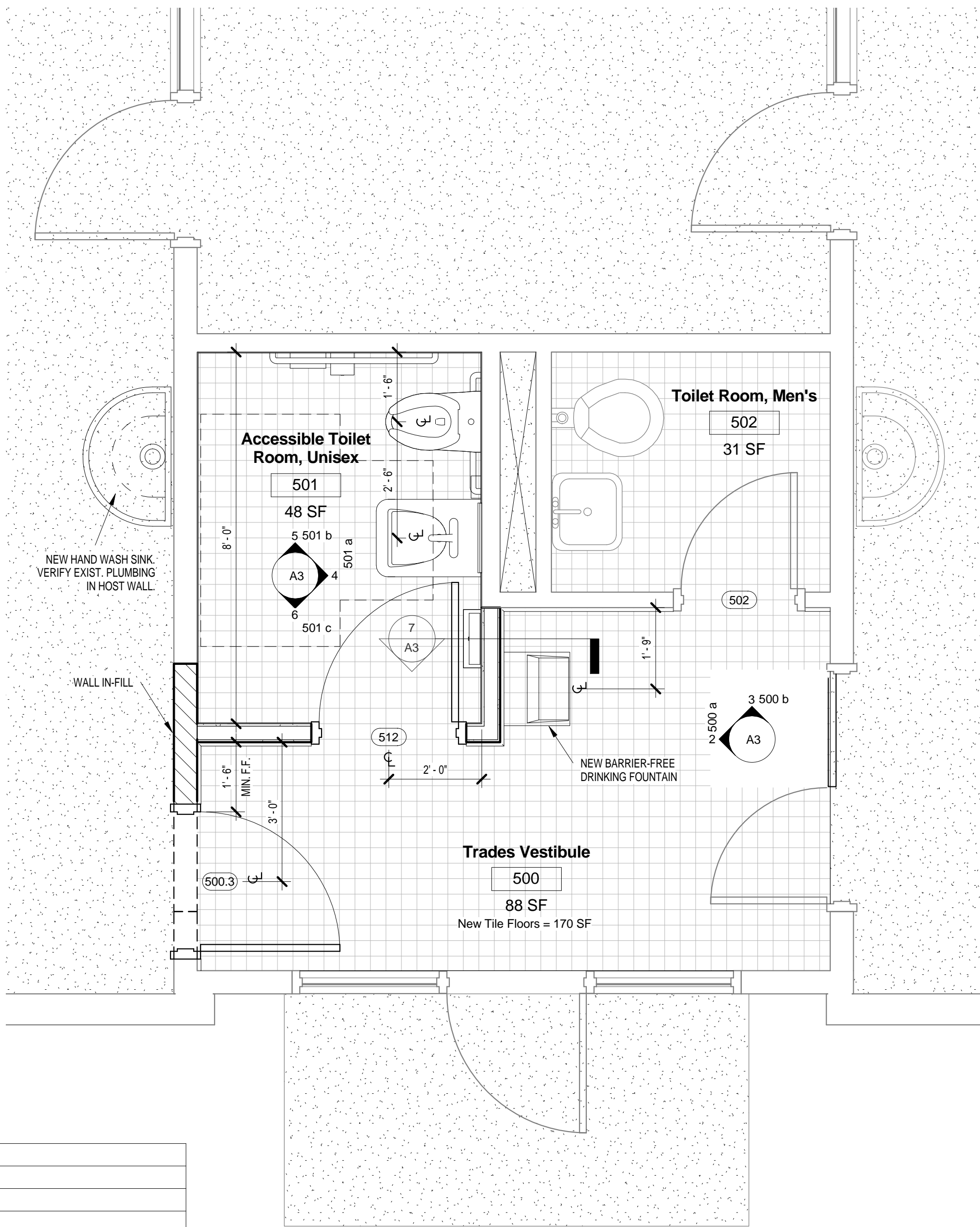
PROJECT NO. 0410

DRAWN LWL

DATE August 22, 2011

A3

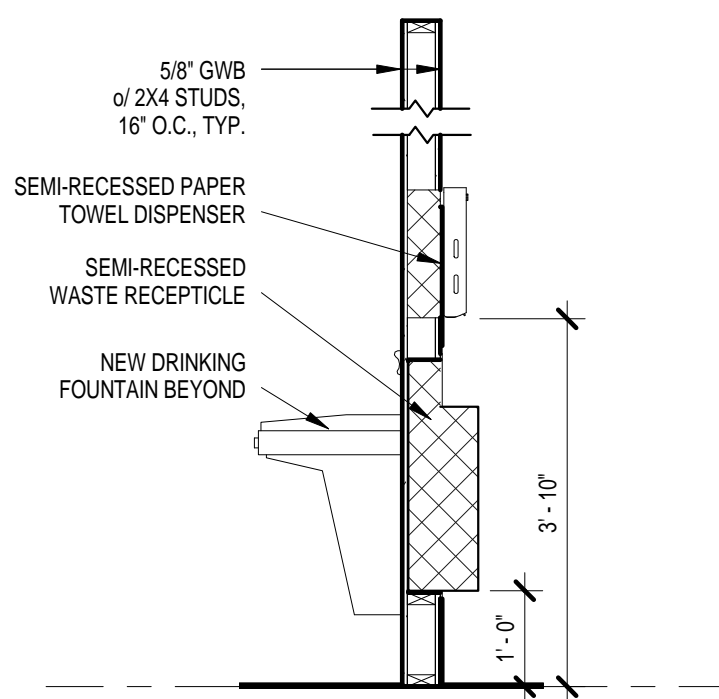
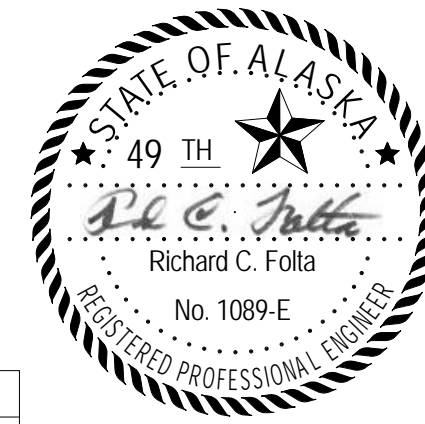
9/20/2011 12:25:25 PM



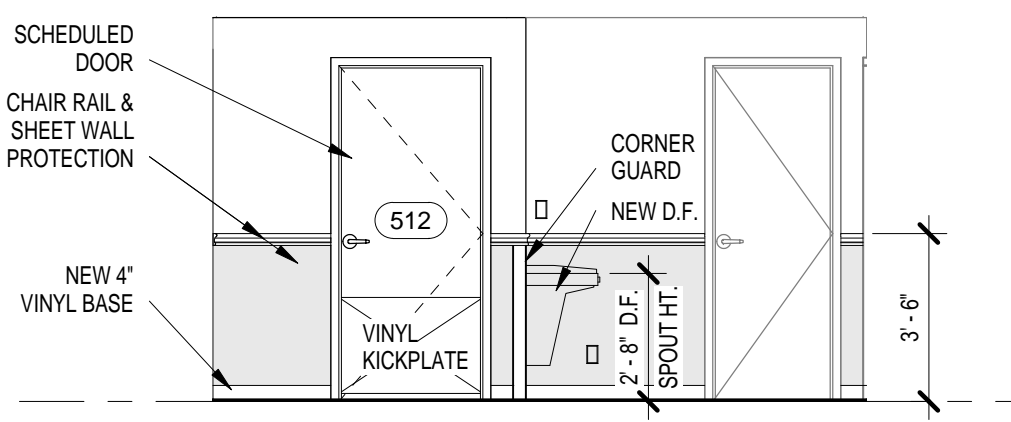
1 Enlarged Floor Plan
1/2" = 1'-0"

ROOM FINISH ABBREVIATIONS

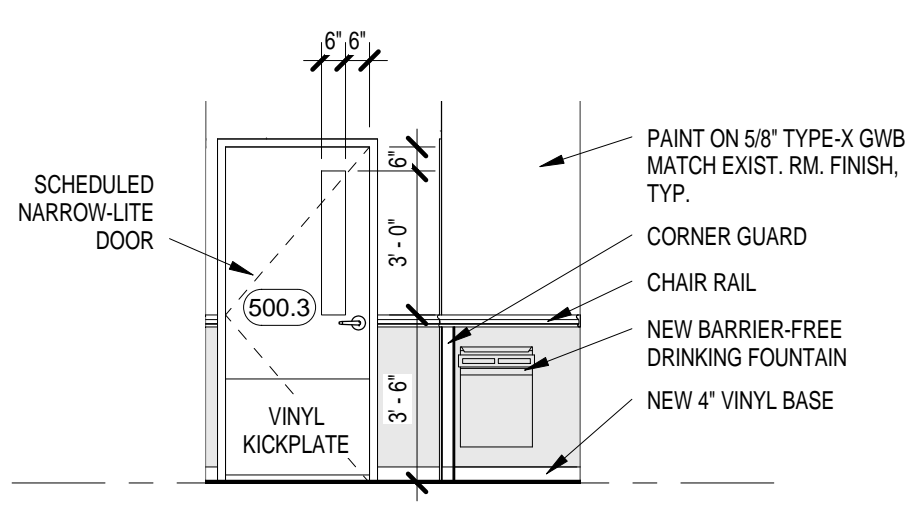
HIWC	High Impact Wall Covering
PNT	Paint
CT	Ceramic Tile
VNL	Vinyl
EXIST.	Existing to Remain



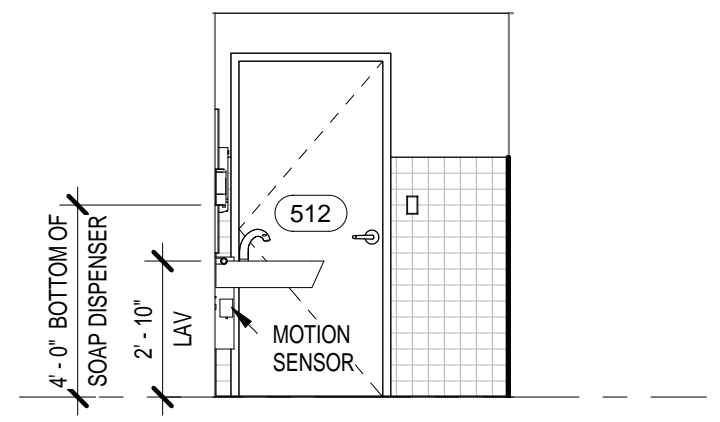
7 New Wall Section @ Towel Dispenser
1/2" = 1'-0"



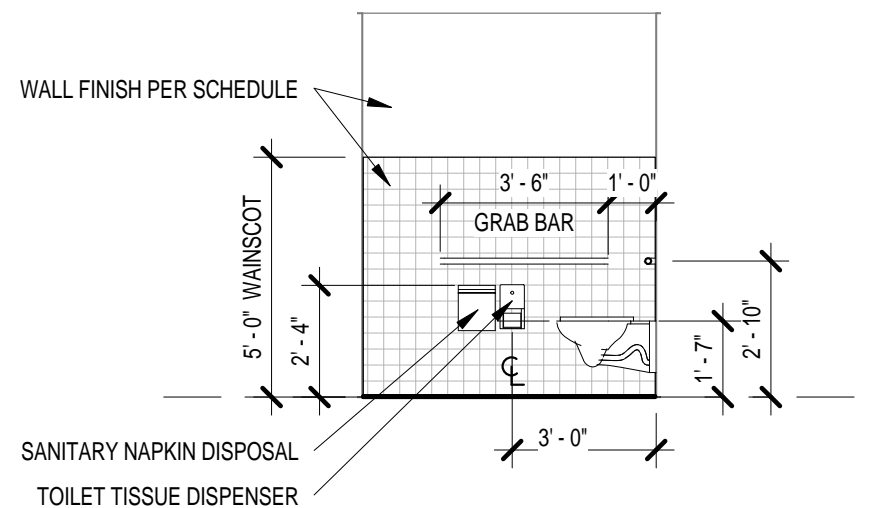
3 500 b
1/4" = 1'-0"



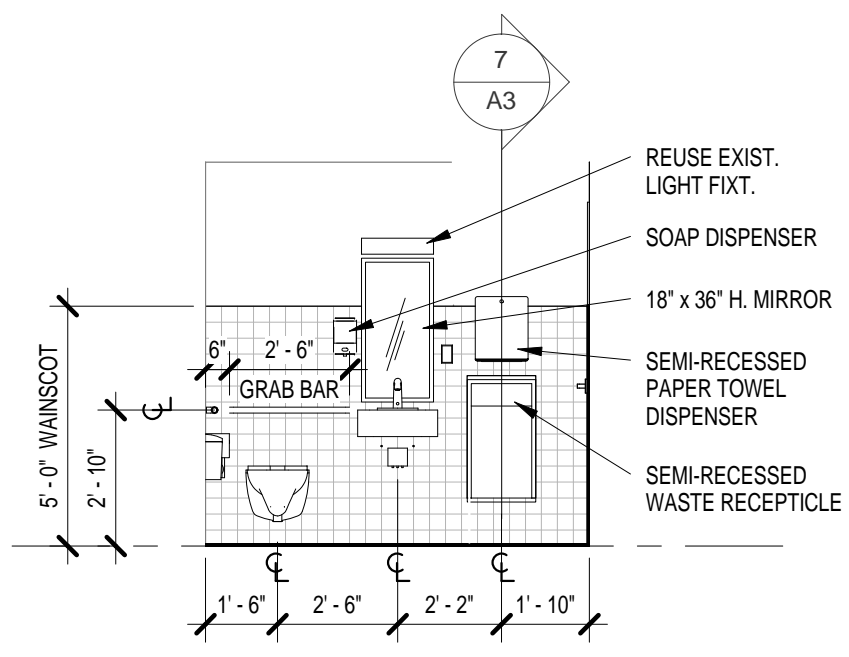
2 500 a
1/4" = 1'-0"



6 501 c
1/4" = 1'-0"



5 501 b
1/4" = 1'-0"



4 501 a
1/4" = 1'-0"

ROOM FINISH SCHEDULE										
Name	Number	Area	North Wall	East Wall	South Wall	West Wall	Floor Finish	Base Finish	Ceiling Finish	Comments
Trades Vestibule	500	88 SF	PNT	PNT	PNT / HIWC	PNT / HIWC	CT	VNL	PNT	Owner Choose Colors
Accessible Toilet Room, Unisex	501	48 SF	PNT / CT	PNT / CT	PNT / CT	PNT / CT	CT - Unglazed		PNT	Emulate Toilet Rooms in Main Building
Toilet Room, Men's	502	31 SF	PNT / CT	PNT / CT	PNT / CT	PNT / CT	CT - Unglazed		PNT	Emulate Toilet Rooms in Main Building

GUTTERS						
Mark	Description	Manufacturer	Model	Material	URL	Comments
18	6" Commercial Gutter	Perimeter Systems	G1-R6	Metal - Aluminum	http://www.saf.com/persys/?page_id=2478	Match Siding Color. See Below for Downspouts

MULTI-CATEGORY SCHEDULE						
Mark	Category	Description	Manufacturer	Model	Comments	URL
	Generic Models	3" x 4" RECTANGULAR DOWNSPOUTS	Perimeter Systems		Match Siding Color	http://www.saf.com/persys/
0	Generic Models	3" x 4" RECTANGULAR DOWNSPOUTS	Perimeter Systems			http://www.saf.com/persys/
1	Plumbing Fixtures	Electronic Proximity Lavatory Faucet	American Standard	6058		http://www.americanstandard-us.com
2	Plumbing Fixtures	Wheelchair Users Lavatory	American Standard	9140.047		http://www.americanstandard-us.com
3	Plumbing Fixtures	ADA Barrier Free Cooler, Light Gray	Elkay	EZ58L		http://www.amazon.com/Hands-Free-Cooler-Stainless-Steel/dp/B003YJXLIM
4	Plumbing Fixtures	Wall Hung Flushometer Toilet	TOTO	CT708E		http://www.totousa.com
5	Plumbing Fixtures	ADA Washfountain, 36" x 7 1/2" Deep Bowl	Bradley	TDB3103	Owner Choose Color	http://www.bradleycorp.com/products/fixtures/washfountains/classic/viewproduct.jsp?pgid=1565
6	Generic Models	Toilet Paper Dispenser _ 2-Roll, Satin Finish Stainless Stl.	Bobrick	B-2888		www.bobrick.com
7	Generic Models	Corner Guard	Pawling Corporation	CG-7	Owner Choose Color	http://architectural.pawling
8	Generic Models	42" Stainless Steel Grab Bar	Generic			
9	Generic Models	30" Stainless Steel Grab Bar	Generic			
10	Generic Models	Soap Dispenser			Reuse Existing	
13	Specialty Equipment	Custom size door kickplate	InPro Corporation	KP3	Owner Choose Color	www.inprocorp.com
14	Specialty Equipment	Custom size door kickplate	InPro Corporation	KP3	Owner Choose Color	www.inprocorp.com
15	Specialty Equipment	Mirror_ Stainless Steel Frame _ 18" x 36"	Generic			
16	Specialty Equipment	Sanitary Napkin Disposal	Bobrick	B-254		http://www.bobrick.com/Bohrick/TechnicalData/B-254.pdf
17	Specialty Equipment	IPC Rigid Sheet	InPro Corporation	306		www.inprocorp.com
18	Furniture	Automatic Towel Dispenser	Georgia-Pacific	enMotion 59466	Semi-Recessed	http://www.gppro.com
19	Furniture	Refuse Holder	Bradley Corporation	344-000000		http://www.bradley.com

NEW / REPLACEMENT DOOR SCHEDULE											
Door No.	Type	Opening Width	Opening Height	Manufacturer	Model	Description	Frame Type	Hardware	Finish		URL
									Door	Frame	
506.3	Sectional O.H. Door_Full Vision @ Section 3	10' - 0"	10' - 0"	Clopay	3722	2" insul. stucco embossed 20 ga. stl. flush exter. std. 15" R Track		Per Specifications	Factory White		www.clopaydoor.com
512	3'-0" x 7'-0" Metal_5.75" x 2"			Steelcraft		Standard Steel Door & Frame	F16_16 ga Dbl. Rabbet K.D.	Reuse fr. Door # 501 Existing	Paint	Paint	Paint Doors, #512; #502 & #500.3 www.steelcraft.com
500.3	3'-0" x 7'-0" Metal_7.75" x 2" Narrow Lite			Steelcraft		Narrow Lite Vision Steel Door & Frame Per Interior Elevations	F18_18 ga Dbl. Rabbet K.D.	Per Specifications	Paint	Paint	Paint Doors, #512; #502 & #500.3 www.steelcraft.com